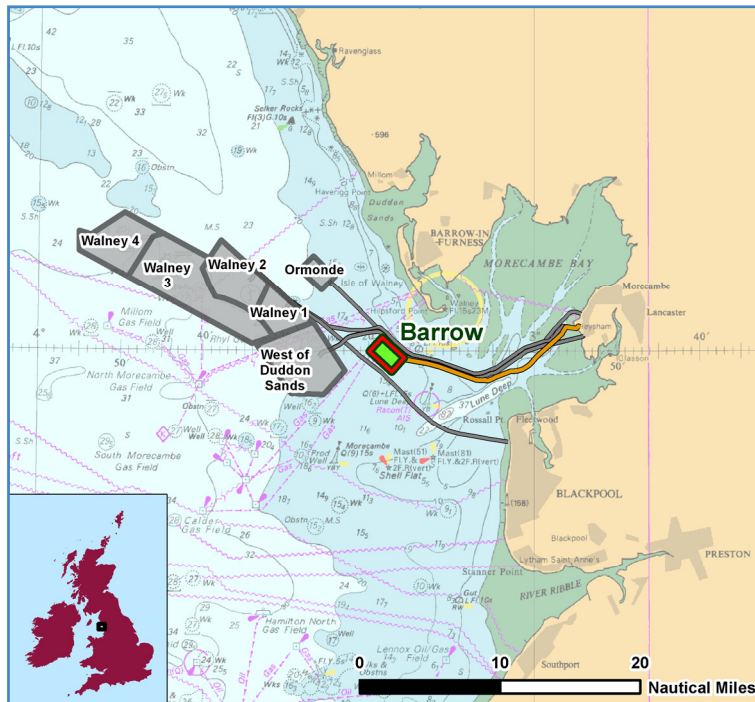


# Kingfisher Charts

## Wind Farms

BARROW OFFSHORE WIND FARM

JANUARY 2018



### Description:

The Barrow Offshore Wind Farm is operated by Orsted (formerly DONG Energy). It is situated approximately 7 km from shore in the East Irish Sea, off the North Lancashire coast. The wind farm is fully operational and has 30 turbines, a total capacity of 90 MW and covers an area of approximately 10 km<sup>2</sup>.

## Reducing the Risks whilst Fishing

To reduce the risks of fishing near offshore structures, it is essential to be up to date with KIS-ORCA information. KIS-ORCA information is easy to install on your vessel's fishing plotter and ensures skippers are able to make informed decisions for their safety.

The closer to the surface a subsea cable is lifted when fouled by fishing gear, the more danger there is to the fishing vessel. In the interests of fishing safety and to prevent damage to subsea structures, fishermen are advised to exercise caution when fishing in the vicinity of subsea cables and renewable energy structures. Loss of gear, fishing time and catch can result if a trawler snags a subsea structure and there is serious risk of loss of life.

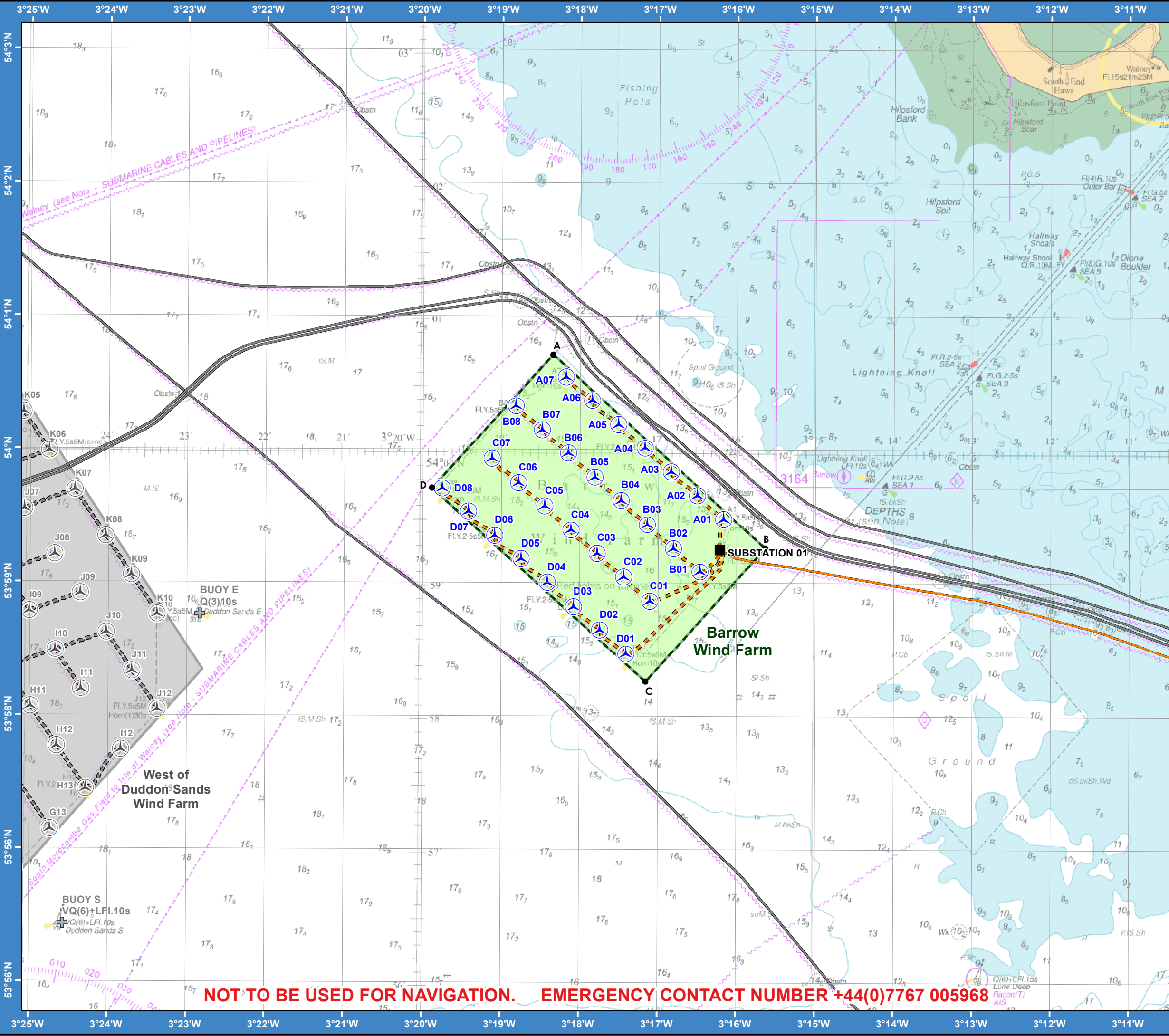
## Emergency Procedures

1. If you suspect you have snagged a subsea cable or renewable energy structure, DO NOT endanger your vessel and crew by attempting to recover your gear.
2. Carefully plot your vessel's position as accurately as possible.
3. Advise the Coastguard of your situation, and call the 24 hour Emergency Number and state that an incident is occurring concerning a subsea cable or renewable energy structure.

## Emergency Contact Number:

**+44(0)7767 005968**

STAY UP TO DATE - ALWAYS ENSURE YOU HAVE THE LATEST KINGFISHER BULLETIN AND OFFSHORE FISHING PLOTTER DATA ON-BOARD.



**SEAFISH**  
The Kingfisher  
Information Service



**Barrow  
Offshore Wind Farm**

- Key**
- Site boundary
  - Wind turbine
  - Substation
  - Export cable
  - Inter array cable

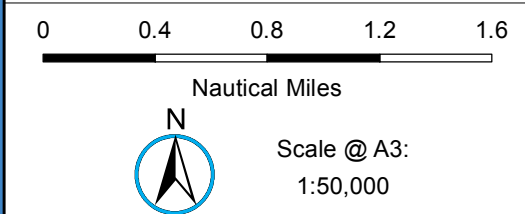


Projection: WGS\_1984\_UTM\_Zone\_30N  
Spheroid: GCS\_WGS\_1984  
Datum: D\_WGS\_1984

This data is issued as a guide only.  
Seafish, cable / structure owners and Distributors  
accept no responsibility for any inaccuracies  
however caused.

Please be aware that other structures & cables  
may exist in addition to those shown on this chart.

©Crown Copyright and/or database rights.  
Reproduced by permission of the Controller of  
Her Majesty's Stationery Office and the UK  
Hydrographic Office ([www.GOV.UK/UKHO](http://www.GOV.UK/UKHO)).



**NOT TO BE USED FOR NAVIGATION. EMERGENCY CONTACT NUMBER +44(0)7767 005968**

# Asset locations:

EXTENT S	
A	54°00.712'N 03°18.346'W
B	53°59.265'N 03°15.639'W
C	53°58.264'N 03°17.159'W
D	53°59.711'N 03°19.882'W

INFRASTRUCTURE	
SUB 01	53°59.252'N 03°16.212'W

TURBINES	
A01	53°59.482'N 03°16.165'W
A02	53°59.660'N 03°16.501'W
A03	53°59.838'N 03°16.836'W
A04	54°00.016'N 03°17.171'W
A05	54°00.192'N 03°17.507'W
A06	54°00.372'N 03°17.842'W
A07	54°00.546'N 03°18.178'W
B01	53°59.088'N 03°16.467'W
B02	53°59.262'N 03°16.802'W
B03	53°59.442'N 03°17.138'W
B04	53°59.622'N 03°17.473'W
B05	53°59.796'N 03°17.809'W
B06	53°59.976'N 03°18.144'W
B07	54°00.150'N 03°18.479'W
B08	54°00.330'N 03°18.815'W
C01	53°58.866'N 03°17.104'W
C02	53°59.046'N 03°17.439'W
C03	53°59.226'N 03°17.775'W
C04	53°59.400'N 03°18.110'W
C05	53°59.580'N 03°18.445'W
C06	53°59.754'N 03°18.781'W
C07	53°59.934'N 03°19.117'W
D01	53°58.470'N 03°17.405'W
D02	53°58.650'N 03°17.740'W
D03	53°58.824'N 03°18.075'W
D04	53°59.004'N 03°18.411'W
D05	53°59.184'N 03°18.746'W
D06	53°59.358'N 03°19.082'W
D07	53°59.538'N 03°19.417'W
D08	53°59.712'N 03°19.753'W

**STAY UP TO DATE** - ALWAYS ENSURE YOU HAVE THE LATEST KINGFISHER BULLETIN AND OFFSHORE FISHING PLOTTER DATA ON-BOARD.