

# **Ørsted - West Coast Operational Assets**

## **Notice to Mariners**

**Period of Notice:  
26/05/2020 to 26/06/2020**

**Version: 1**

# Table of Contents

1	Introduction.....	4
1.1	Subsea Cables .....	4
1.2	Wind Farm Positional Data.....	4
2	Key Contacts.....	5
3	Notice to Mariners Summary: .....	6
4	Barrow – Notice to Mariners .....	7
4.1	Layout Chart and Coordinates.....	7
4.2	Lighting and Marking Status.....	7
4.3	Survey Operations.....	7
4.4	Jack-up Operations .....	7
4.5	Other Operations.....	7
5	Burbo – Notice to Mariners.....	8
5.1	Layout Chart and Coordinates.....	8
5.2	Lighting and Marking Status.....	8
5.3	Survey Operations.....	8
5.4	Jack-up Operations .....	8
5.5	Other Operations.....	8
6	Burbo Extension – Notice to Mariners.....	9
6.1	Layout Chart and Coordinates.....	9
6.2	Lighting and Marking Status.....	9
6.3	Survey Operations.....	9
6.4	Jack-up Operations .....	9
6.5	Other Operations.....	9
7	Walney 01 & 02 – Notice to Mariners.....	10
7.1	Layout Chart and Coordinates.....	10
7.2	Lighting and Marking Status.....	10
7.3	Survey Operations.....	10
7.4	Jack-up Operations .....	10

7.5	Other Operations.....	10
8	Walney Extension (03 & 04) – Notice to Mariners.....	12
8.1	Layout Chart and Coordinates.....	12
8.2	Lighting and Marking Status.....	12
8.3	Survey Operations.....	12
8.4	Jack-up Operations .....	12
8.5	Other Operations.....	12
9	West of Duddon Sands – Notice to Mariners.....	13
9.1	Layout Chart and Coordinates.....	13
9.2	Lighting and Marking Status.....	13
9.3	Survey Operations.....	13
9.4	Jack-up Operations .....	13
9.5	Other Operations.....	14

## 1 Introduction

Ørsted is an offshore wind farm operator that currently has ten operational wind farms in UK waters. The following operational offshore wind farms are located off the West Coast of England (see figure overleaf):

- Barrow (BOW)
- Burbo Bank (BBW)/ Burbo Bank Extension (BBW2)
- Walney 1 & 2 (WOW0102)/ Walney 3 & 4 (WOW0304)
- West of Duddon Sand (WDS)

The purpose of this Notice to Mariners (NtM) is to ensure that mariners are aware of any non-routine operations across the West Coast assets that could pose a risk to other sea users. Safety is paramount to Ørsted and this notice should assist in ensuring that both mariners and the Ørsted operational team can operate safely offshore. This NtM will provide:

- A regular, clear and consistent overview of non-routine operations
- Updates relating to lighting and marking
- Key contact details
- Access to detailed site information and figures
- Clarity on when Safety Zones and recommended safe separation distances are in force or requested

This Notice to Mariners will not provide:

- Information relating to routine maintenance carried out by Crew Transfer Vessels (CTV) or Service Operation Vessels (SOV).
- Any information relating to export cables not operated by Ørsted (BOW, BBW2 and WOW0102)
- Any information relating to offshore wind farms currently in development, construction or not operated by Ørsted

### 1.1 Subsea Cables

Subsea cables are installed across each offshore wind farm and are marked on the KIS ORCA charts referenced in Section 1.2. Please note the following advice from NP 100 The Mariners Handbook “Every care should be taken to avoid anchoring, trawling, fishing, dredging, drilling, or carrying out any other activity in the vicinity of cables which might damage them.” This warning is repeated on all admiralty charts.

### 1.2 Wind Farm Positional Data

KIS ORCA Awareness Charts (including the layout and coordinates) and Fishing Plotter Files of the offshore assets referenced in this NtM can be found via the KIS ORCA website:

Barrow: <http://www.kis-orca.eu/media/99715/1%20-%20Barrow.pdf>

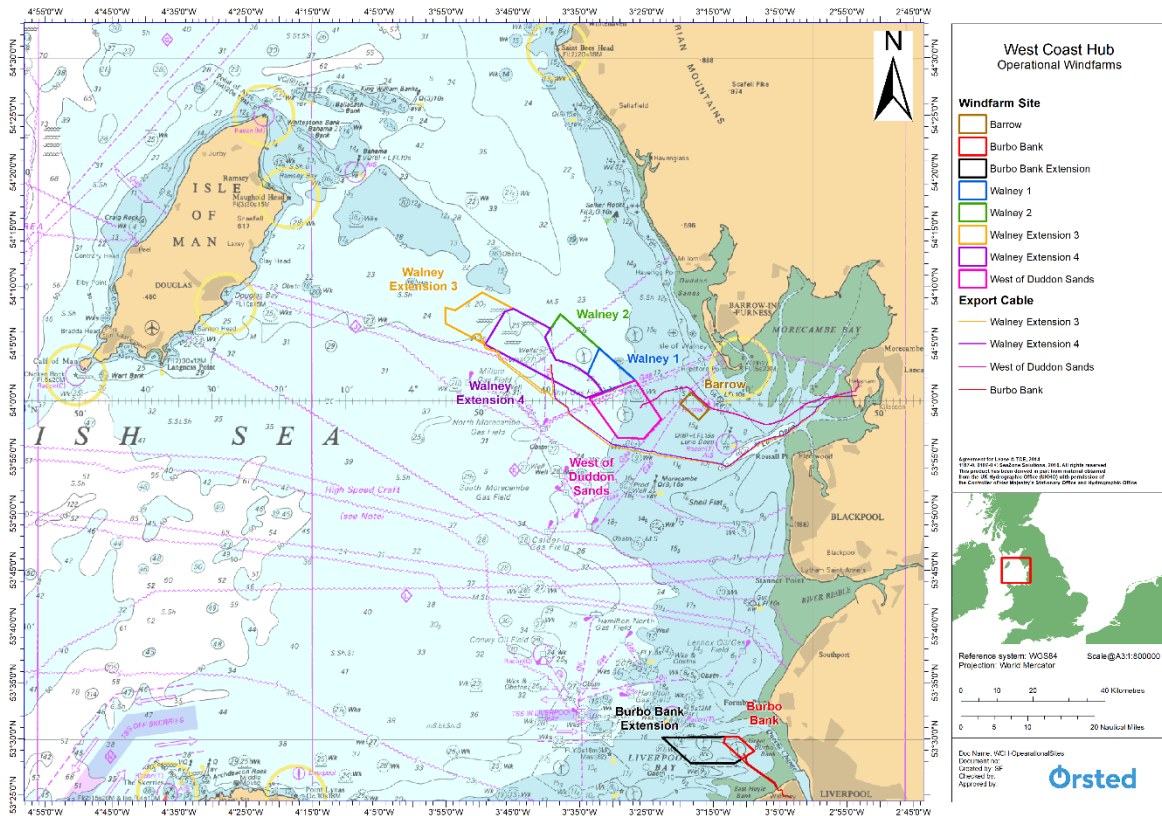
Burbo and Burbo Extension: <http://www.kis-orca.eu/media/99808/3%20-%20Burbo%20Bank.pdf>

Walney 1, 2, 3 & 4: <http://www.kis-orca.eu/media/99896/25%20-%20Walney%201-4.pdf>

West of Duddon Sands: <http://www.kis-orca.eu/media/99904/27%20-%20West%20of%20Duddon%20Sands.pdf>

Should mariners require further information or any data in a format that can be used in a plotter or other device, please contact the Company Fisheries Liaison Officer, listed in Section 2 below.

The below figure shows the location of Ørsted's operational offshore wind farms.



## 2 Key Contacts

For further information on any of the activities listed within this notice, please use the contact details below.

Site	Ørsted Mailbox/ Offshore Coordination	Fisheries Industry Representative
Barrow Burbo and Burbo Extension Walney (01 & 02) Walney Extension (03 & 04) West of Duddon Sands	WestTraffic@orsted.co.uk 01229 225961	Tom Watson Phone: 07903 173624 Email: tomwatsonfleetwood@btinternet.com

### Company Fisheries Liaison Officer

The Ørsted Company Fisheries Liaison Officer can be contacted using the details below:

Courtney French

Email: CONFR@Orsted.co.uk

### 3 Notice to Mariners Summary:

Site	Lighting and Marking Status	Survey	Jack-Up Vessel	Other Works	Further Details (Page)
Barrow (BOW)	A07, A01 – Navigation lights extinguished.	N/A	N/A	N/A	Section 4
Burbo Bank (BBW 01)	BB38 – Fog Signal inoperative. BB41 – Navigation Light extinguished	N/A	N/A	N/A	Section 5
Burbo Extension (BBW 02)	A01, E05, L05, F01 Navigation Light Extinguished.	N/A	N/A	N/A	Section 6
Walney 01 and 02 (WOW 01&02)	A11 – Fog signal inoperative.	N/A	N/A	**Rix Lion supporting maintenance  **Suspended load at B07	Section 7
Walney Extension (WOW 03 & WOW 04) (WOW Ext)	C01 Navigation Light Extinguished  S Cardinal extinguished 54° 03.419'N 003°44.990'W  W Cardinal extinguished 54°06.632'N 003°55.335'W  S Cardinal extinguished 54°00.205'N 003°34.661'W	N/A	N/A	N/A	Section 8
West of Duddon Sands	N/A	N/A	Wind Server on site*	N/A	Section 9

- \* Formal 500m safety zone in place
- \*\* 500m safety distance requested
- ° Licensable activities

## 4 Barrow – Notice to Mariners

### 4.1 Layout Chart and Coordinates

Information on Barrow Offshore Windfarm can be found on the link below:

<http://www.kis-orca.eu/media/99715/1%20-%20Barrow.pdf>

### 4.2 Lighting and Marking Status

Turbine	Latitude	Longitude	Issue
A01	53°59.482'N	003°16.165'W	Navigation Light Extinguished
A07	54°00.546'N	003°18.178'W	Navigation Light Extinguished

### 4.3 Survey Operations

Nothing to Report.

### 4.4 Jack-up Operations

Nothing to report.

### 4.5 Other Operations

Nothing to report.

## 5 Burbo – Notice to Mariners

### 5.1 Layout Chart and Coordinates

Information on Burbo Bank 01 Offshore Windfarm can be found on the link below:

<http://www.kis-orca.eu/media/99808/3%20-%20Burbo%20Bank.pdf>

### 5.2 Lighting and Marking Status

Turbine	Latitude	Longitude	Issue
BB38	53°30.117'N	003°09.370'W	Fog Signal Inoperative
BB42	53°29.120'N	003°09.370'W	Navigation Light Extinguished

### 5.3 Survey Operations

Nothing to report.

### 5.4 Jack-up Operations

Nothing to report.

### 5.5 Other Operations

Nothing to report.



## 6 Burbo Extension – Notice to Mariners

### 6.1 Layout Chart and Coordinates

Information on Burbo Bank 02 Offshore Windfarm can be found on the link below:

<http://www.kis-orca.eu/media/99808/3%20-%20Burbo%20Bank.pdf>

### 6.2 Lighting and Marking Status

Turbine	Latitude	Longitude	Issue
A01	53°30.089'N	003°22.363'W	Navigation Light Extinguished
E05	53°27.871'N	003°18.323'W	Navigation Light Extinguished
F01	53°30.106'N	003°17.202'W	Navigation Light Extinguished
L05	53°27.889'N	003°12.047'W	Navigation Light Extinguished

### 6.3 Survey Operations

Nothing to report.

### 6.4 Jack-up Operations

Nothing to report.

### 6.5 Other Operations

Nothing to report.

## 7 Walney 01 & 02 – Notice to Mariners

### 7.1 Layout Chart and Coordinates

Information on Walney Offshore Windfarm 01&02 can be found on the link below:

<http://www.kis-orca.eu/media/99896/25%20-%20Walney%201-4.pdf>

### 7.2 Lighting and Marking Status

Turbine	Latitude	Longitude	Issue
A11	54°04.473'N	003°31.990'W	Fog Signal Inoperative

### 7.3 Survey Operations

Nothing to report.

### 7.4 Jack-up Operations

Nothing to Report.

### 7.5 Other Operations

Transition Piece maintenance will be undertaken on Walney 1&2 from 1<sup>st</sup> May for a provisional 4 months. Sequence of locations and dates are unavailable as works will be weather dependant and coordinated to ensure no conflict with routine maintenance operations.

#### **Safety Zone**


We request Mariners observe a 500m distance from the affected turbine(s) while works are being carried out.

The CTV “Rix Lion” will act as Guard Vessel during the maintenance programme with the vessel broadcasting the Turbine ID, establishment/cancellation of the safety areas and seeking contact with marine traffic approaching or nearing the areas on VHF Channel 16 and 12.

When “Rix Lion” is operating in the Wind Farm, you can assume work is being undertaken on several turbines which will have the requested safety areas in place.

#### **Vessel Information**

Contact can be made directly with the vessel using the contact details listed below:

General Information		Vessel Picture
<b>Name</b>	Rix Lion	
<b>Flag</b>	United Kingdom	
<b>Year Built</b>	2014	
<b>IMO Number</b>	9745706	
<b>Call Sign</b>	2HOH3	
<b>LOA</b>	25.75	
<b>Vessel Contact Details</b>		
<b>VHF</b>	Ch. 16/Ch. 12	

**Cautionary Notice – Walney 01, B07**

Mariners are advised that due to a fault on the turbine nacelle crane there is presently a suspended load at B07, position 54 °03.23'N 003 °30.760'W

For their safety, Mariners are requested to maintain a minimum 200m from this location until the suspended load is removed, which we expect to be within 72 hours.

## 8 Walney Extension (03 & 04) – Notice to Mariners

### 8.1 Layout Chart and Coordinates

Information on Walney Extension Windfarm can be found on the link below:

<http://www.kis-orca.eu/media/99896/25%20-%20Walney%201-4.pdf>

### 8.2 Lighting and Marking Status

Turbine	Latitude	Longitude	Issue
S Cardinal	54° 03.419'N	003°44.990'W	Light Extinguished
W Cardinal	54°06.632'N	003°55.335'W	Light Extinguished
S Cardinal	54°00.205'N	003°34.661'W	Light Extinguished
C01	54°08.102'N	003°55.040'W	Navigation Light Extinguished

### 8.3 Survey Operations

Nothing to report.

### 8.4 Jack-up Operations

Nothing to report

### 8.5 Other Operations

Nothing to report.

## 9 West of Duddon Sands – Notice to Mariners

### 9.1 Layout Chart and Coordinates

Information on West of Duddon Sands Windfarm can be found on the link below:

<http://www.kis-orca.eu/media/99904/27%20%20West%20of%20Duddon%20Sands.pdf>

### 9.2 Lighting and Marking Status

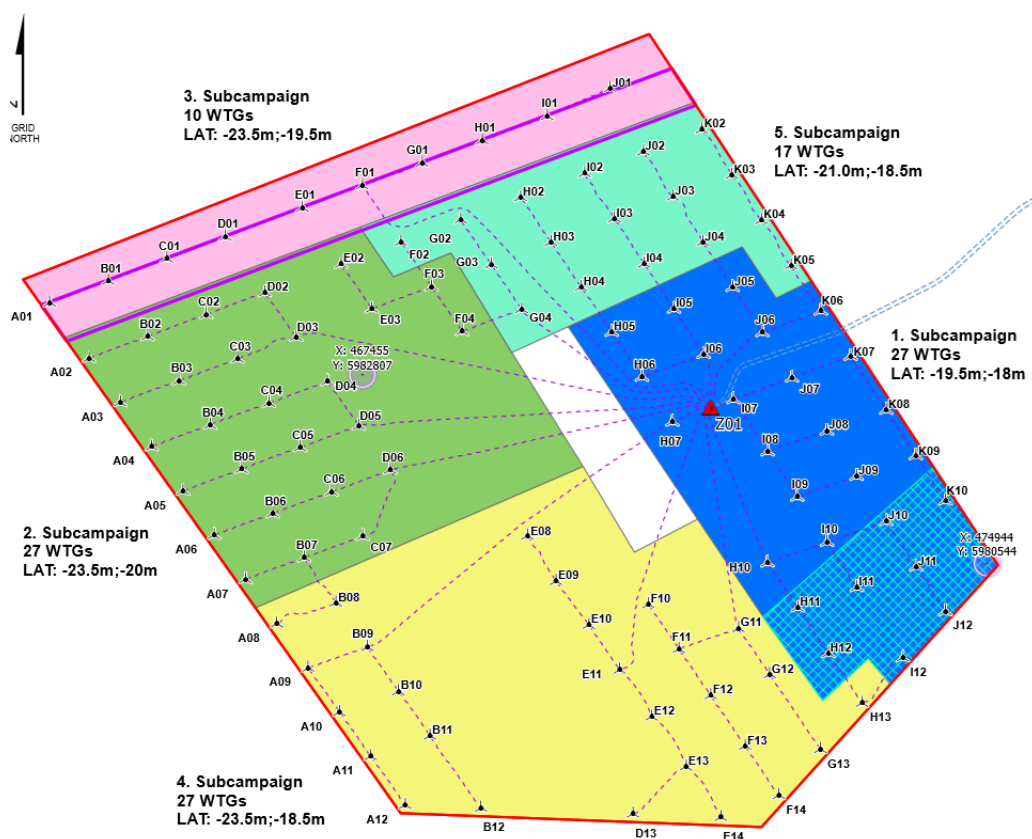
All navigation aids are fully operational.

### 9.3 Survey Operations

Nothing to report.

### 9.4 Jack-up Operations

The jack-up vessel, Wind Server, will visit be working on West of Duddon Sands Wind Farm. The exact sequence of turbine locations is unavailable, however details of the area in which the vessel will be working is detailed on the below site chart. The windfarm has been divided into five sectors defined by A1 (Blue), A2 (Green), A3 (Pink), A4 (Yellow), A5 (Teal). Wind Server is currently working in area A2 (Green) and expected to be so for the next few weeks. It is requested that fishing and laying gear is avoided in these areas until works are complete. Duration dates are dependent on weather and work progress.




### Safety Zone

Mariners should note that there is a mandatory 500m Safety Zone<sup>1</sup> whenever a Jack-up is pulled-up alongside a Turbine. A minimum 500 metres is also requested whenever the vessel can be observed afloat and manoeuvring into position.

### Vessel Information

Contact can be made directly with the vessels using the contact details listed below.

General Information		Vessel Picture
<b>Name</b>	Wind Server	
<b>Flag</b>	Denmark	
<b>Year Built</b>	2014	
<b>IMO Number</b>	9670793	
<b>Call Sign</b>	OWLB2	
<b>LOA</b>	79.3m	
Vessel Contact Details		
<b>VHF</b>	Ch. 16/Ch. 12	

## 9.5 Other Operations

Nothing to report.

<sup>1</sup> In accordance with section 95 of the Energy Act 2004 .

