

Ørsted - West Coast Operational Assets

Notice to Mariners

**Period of Notice:
23/04/2020 to 23/05/2020**

Version: 1

Table of Contents

1	Introduction	4
1.1	Subsea Cables	4
1.2	Wind Farm Positional Data	4
2	Key Contacts	5
3	Notice to Mariners Summary:.....	6
4	Barrow – Notice to Mariners.....	7
4.1	Layout Chart and Coordinates	7
4.2	Lighting and Marking Status.....	7
4.3	Survey Operations	7
4.4	Jack-up Operations	7
4.5	Other Operations.....	7
5	Burbo – Notice to Mariners	8
5.1	Layout Chart and Coordinates	8
5.2	Lighting and Marking Status.....	8
5.3	Survey Operations	8
5.4	Jack-up Operations	8
5.5	Other Operations.....	8
6	Burbo Extension – Notice to Mariners.....	9
6.1	Layout Chart and Coordinates	9
6.2	Lighting and Marking Status.....	9
6.3	Survey Operations	9
6.4	Jack-up Operations	9
6.5	Other Operations.....	9
7	Walney 01 & 02 – Notice to Mariners.....	10
7.1	Layout Chart and Coordinates	10
7.2	Lighting and Marking Status.....	10
7.3	Survey Operations	10
7.4	Jack-up Operations	10

7.5	Other Operations.....	10
8	Walney Extension (03 & 04) – Notice to Mariners	11
8.1	Layout Chart and Coordinates	11
8.2	Lighting and Marking Status.....	11
8.3	Survey Operations	11
8.4	Jack-up Operations	11
8.5	Other Operations.....	11
9	West of Duddon Sands – Notice to Mariners	12
9.1	Layout Chart and Coordinates	12
9.2	Lighting and Marking Status.....	12
9.3	Survey Operations	12
9.4	Jack-up Operations	12
9.5	Other Operations.....	13

1 Introduction

Ørsted is an offshore wind farm operator that currently has ten operational wind farms in UK waters. The following operational offshore wind farms are located off the West Coast of England (see figure overleaf):

- Barrow (BOW)
- Burbo Bank (BBW)/ Burbo Bank Extension (BBW2)
- Walney 1 & 2 (WOW0102)/ Walney 3 & 4 (WOW0304)
- West of Duddon Sand (WDS)

The purpose of this Notice to Mariners (NtM) is to ensure that mariners are aware of any non-routine operations across the West Coast assets that could pose a risk to other sea users. Safety is paramount to Ørsted and this notice should assist in ensuring that both mariners and the Ørsted operational team can operate safely offshore. This NtM will provide:

- A regular, clear and consistent overview of non-routine operations
- Updates relating to lighting and marking
- Key contact details
- Access to detailed site information and figures
- Clarity on when Safety Zones and recommended safe separation distances are in force or requested

This Notice to Mariners will not provide:

- Information relating to routine maintenance carried out by Crew Transfer Vessels (CTV) or Service Operation Vessels (SOV).
- Any information relating to export cables not operated by Ørsted (BOW, BBW2 and WOW0102)
- Any information relating to offshore wind farms currently in development, construction or not operated by Ørsted

1.1 Subsea Cables

Subsea cables are installed across each offshore wind farm and are marked on the KIS ORCA charts referenced in Section 1.2. Please note the following advice from NP 100 The Mariners Handbook “Every care should be taken to avoid anchoring, trawling, fishing, dredging, drilling, or carrying out any other activity in the vicinity of cables which might damage them.” This warning is repeated on all admiralty charts.

1.2 Wind Farm Positional Data

KIS ORCA Awareness Charts (including the layout and coordinates) and Fishing Plotter Files of the offshore assets referenced in this NtM can be found via the KIS ORCA website:

Barrow: <http://www.kis-orca.eu/media/99715/1%20-%20Barrow.pdf>

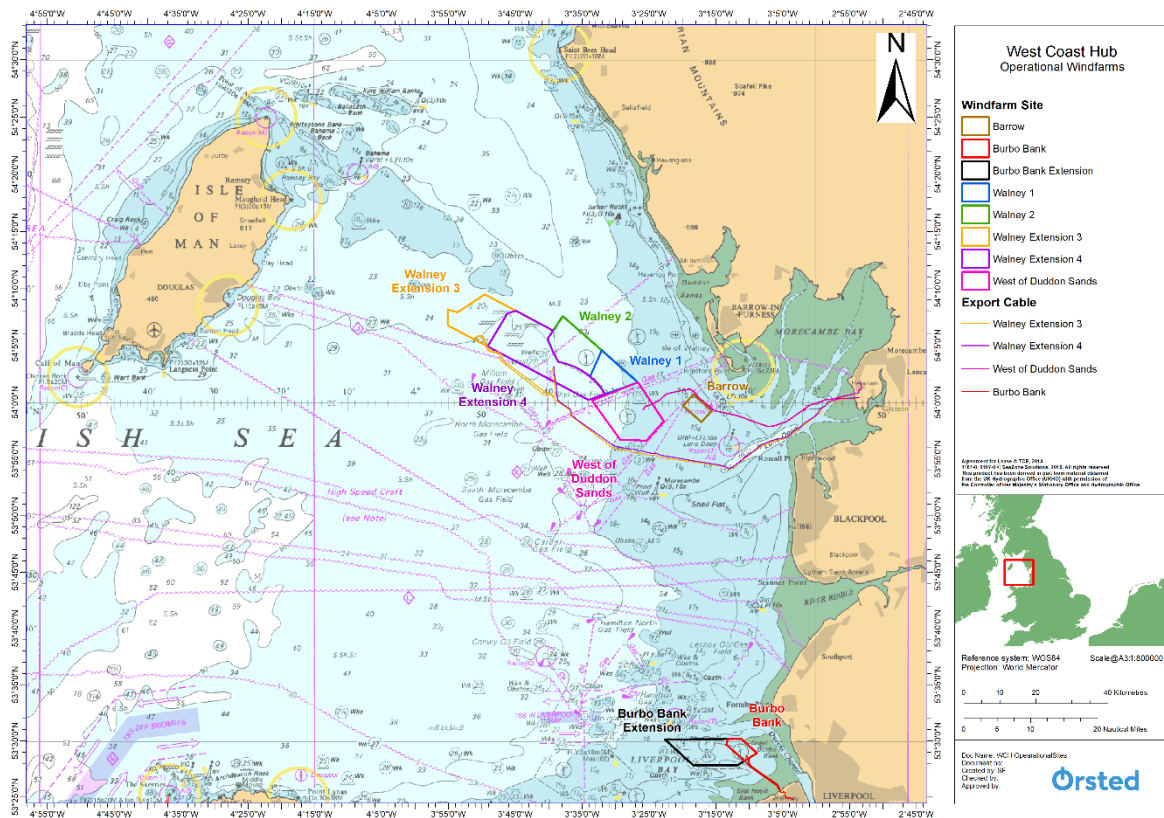
Burbo and Burbo Extension: <http://www.kis-orca.eu/media/99808/3%20-%20Burbo%20Bank.pdf>

Walney 1, 2, 3 & 4: <http://www.kis-orca.eu/media/99896/25%20-%20Walney%201-4.pdf>

West of Duddon Sands: <http://www.kis-orca.eu/media/99904/27%20-%20West%20of%20Duddon%20Sands.pdf>

Should mariners require further information or any data in a format that can be used in a plotter or other device, please contact the Company Fisheries Liaison Officer, listed in Section 2 below.

The below figure shows the location of Ørsted's operational offshore wind farms.



2 Key Contacts

For further information on any of the activities listed within this notice, please use the contact details below.

Site	Ørsted Mailbox/ Offshore Coordination	Fisheries Industry Representative
Barrow Burbo and Burbo Extension Walney (01 & 02) Walney Extension (03 & 04) West of Duddon Sands	WestTraffic@orsted.co.uk 01229 225961	Tom Watson Phone: 07903 173624 Email: tomwatsonfleetwood@btinternet.com

Company Fisheries Liaison Officer

The Ørsted Company Fisheries Liaison Officer can be contacted using the details below:

Courtney French

Email: CONFR@Orsted.co.uk

3 Notice to Mariners Summary:

Site	Lighting and Marking Status	Survey	Jack-Up Vessel	Other Works	Further Details (Page)
Barrow (BOW)	A07, D03 – Navigation lights extinguished.	N/A	N/A	N/A	Section 4
Burbo Bank (BBW 01)	BB38 – Fog Signal inoperative. BB42 – Navigation Light extinguished	N/A	N/A	N/A	Section 5
Burbo Extension (BBW 02)	C01 – Navigation Light Extinguished.	N/A	Wind Enterprise expected at H01 from 3 rd to 7 th May	Wave Buoy light extinguished and radar reflector missing. 53° 30.11'N 003°21.66'W	Section 6
Walney 01 and 02 (WOW 01&02)	A11 – Fog signal inoperative.	N/A	N/A	N/A	Section 7
Walney Extension (WOW 03 & WOW 04) (WOW Ext)	N Cardinal extinguished 54° 09.719'N 003°49.576'W West Cardinal extinguished 54°06.632'N 003°55.335'W S Cardinal extinguished 54°00.205'N 003°34.661'W	N/A	Wind Enterprise expected at F03 from 8 th to 12 th May	N/A	Section 8
West of Duddon Sands	N/A	N/A	Wind Server on site*	N/A	Section 9

* Formal 500m safety zone in place

** 500m safety distance requested

° Licensable activity

4 Barrow – Notice to Mariners

4.1 Layout Chart and Coordinates

Information on Barrow Offshore Windfarm can be found on the link below:

<http://www.kis-orca.eu/media/99715/1%20-%20Barrow.pdf>

4.2 Lighting and Marking Status

Turbine	Latitude	Longitude	Issue
A07	54°00.546'N	003°18.178'W	Navigation Light Extinguished

4.3 Survey Operations

Nothing to report.

4.4 Jack-up Operations

Nothing to report.

4.5 Other Operations

Nothing to report.

5 Burbo – Notice to Mariners

5.1 Layout Chart and Coordinates

Information on Burbo Bank 01 Offshore Windfarm can be found on the link below:

<http://www.kis-orca.eu/media/99808/3%20-%20Burbo%20Bank.pdf>

5.2 Lighting and Marking Status

Turbine	Latitude	Longitude	Issue
BB38	53°30.117'N	003°09.370'W	Fog Signal Inoperative
BB42	53°29.120'N	003°09.370'W	Navigation Light Extinguished

5.3 Survey Operations

Nothing to report.

5.4 Jack-up Operations

Nothing to report.

5.5 Other Operations

Nothing to report.

6 Burbo Extension – Notice to Mariners

6.1 Layout Chart and Coordinates

Information on Burbo Bank 02 Offshore Windfarm can be found on the link below:

<http://www.kis-orca.eu/media/99808/3%20-%20Burbo%20Bank.pdf>

6.2 Lighting and Marking Status

Turbine	Latitude	Longitude	Issue
C01	53°30.117'N	003°09.370'W	Fog Signal Inoperative

6.3 Survey Operations

Nothing to report.

6.4 Jack-up Operations


The jack-up vessel, Wind Enterprise will be visiting H01 from 3rd to 7th May. Duration dates are dependent on weather and work progress.

Safety Zone

Mariners should note that there is a mandatory 500m Safety Zone¹ whenever a Jack-up is pulled-up alongside a Turbine. A minimum 500 metres is also requested whenever the vessel can be observed afloat and manoeuvring into position.

Vessel Information

Contact can be made directly with the vessels using the contact details listed below.

General Information		Vessel Picture
Name	Wind Enterprise	
Flag	Denmark	
Year Built	2011	
IMO Number	95578244	
Call Sign	OZTU2	
LOA	120.77m	
Vessel Contact Details		
VHF	Ch. 16/Ch. 12	

6.5 Other Operations

Wave Buoy in position 53° 30.11'N 003°21.66'W light extinguished and radar reflector missing.

¹ In accordance with section 95 of the Energy Act 2004 .

7 Walney 01 & 02 – Notice to Mariners

7.1 Layout Chart and Coordinates

Information on Walney Offshore Windfarm 01&02 can be found on the link below:

<http://www.kis-orca.eu/media/99896/25%20-%20Walney%201-4.pdf>

7.2 Lighting and Marking Status

Turbine	Latitude	Longitude	Issue
A11	54°04.473'N	003°31.990'W	Fog Signal Inoperative

7.3 Survey Operations

Nothing to report.

7.4 Jack-up Operations

Nothing to report.

7.5 Other Operations

Nothing to report.

8 Walney Extension (03 & 04) – Notice to Mariners

8.1 Layout Chart and Coordinates

Information on Walney Extension Windfarm can be found on the link below:

<http://www.kis-orca.eu/media/99896/25%20-%20Walney%201-4.pdf>

8.2 Lighting and Marking Status

Turbine	Latitude	Longitude	Issue
N Cardinal	54° 09.719'N	003°49.576'W	Light Extinguished
W Cardinal	54°06.632'N	003°55.335'W	Light Extinguished
S Cardinal	54°00.205'N	003°34.661'W	Light Extinguished

8.3 Survey Operations

Nothing to report.

8.4 Jack-up Operations


The jack-up vessel, Wind Enterprise will be visiting F03 from 8th to 11th May. Duration dates are dependent on weather and work progress.

Safety Zone

Mariners should note that there is a mandatory 500m Safety Zone² whenever a Jack-up is pulled-up alongside a Turbine. A minimum 500 metres is also requested whenever the vessel can be observed afloat and manoeuvring into position.

Vessel Information

Contact can be made directly with the vessels using the contact details listed below.

General Information		Vessel Picture
Name	Wind Enterprise	
Flag	Denmark	
Year Built	2011	
IMO Number	95578244	
Call Sign	OZTU2	
LOA	120.77m	
Vessel Contact Details		
VHF	Ch. 16/Ch. 12	

8.5 Other Operations

Nothing to report.

² In accordance with section 95 of the Energy Act 2004 .

9 West of Duddon Sands – Notice to Mariners

9.1 Layout Chart and Coordinates

Information on West of Duddon Sands Windfarm can be found on the link below:

<http://www.kis-orca.eu/media/99904/27%20%20West%20of%20Duddon%20Sands.pdf>

9.2 Lighting and Marking Status

All navigation aids are fully operational.

9.3 Survey Operations

EGS Watchful will be surveying various turbines in West of Duddon Sands Wind Farm within the A3 (Pink) and A4 (Yellow) of the chart below for the next two to three weeks.


The survey operations will involve side scan sonar as well as highly sensitive, high resolution, multi-beam echo sounders.

Safety Zone

Safety Zone A wide berth, minimum of 500m and reduction in speed is requested when the vessel is operating in the wind-farm.

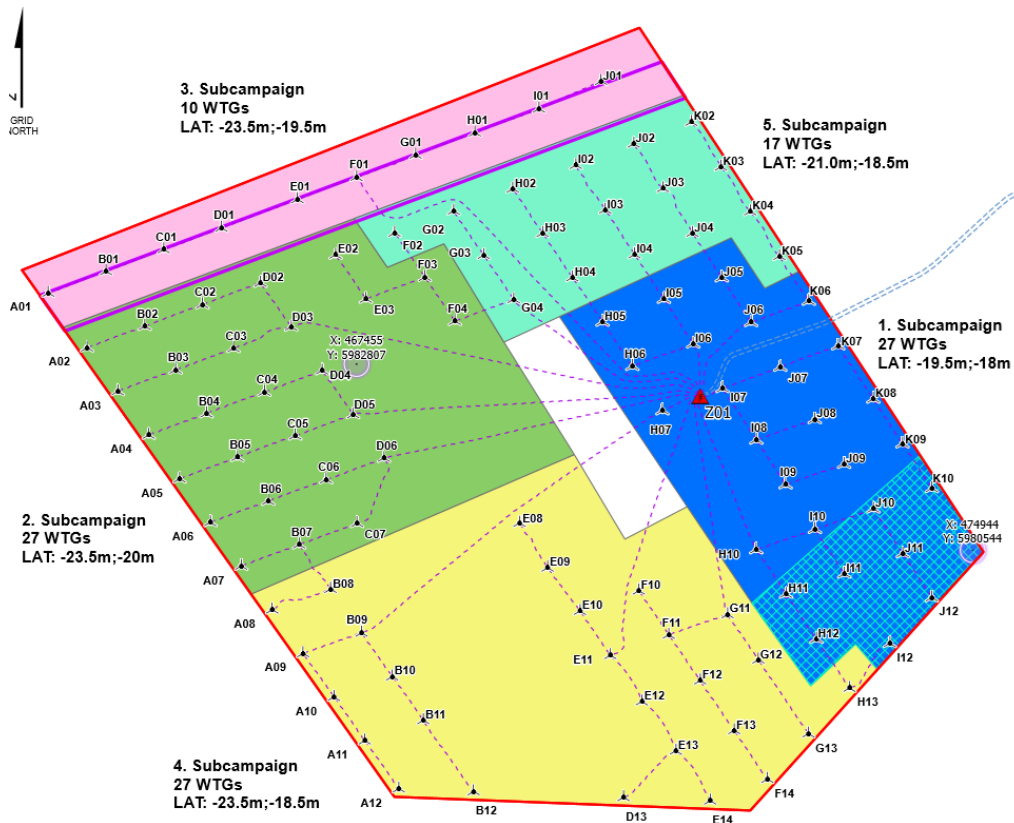
Vessel Information

Contact can be made with the vessel directly as outlined in the table below:

General Information		Vessel Picture
Name	<i>GS Watchful</i>	
Flag	<i>United Kingdom</i>	
Year Built	<i>1982</i>	
IMO Number	<i>Not Applicable</i>	
Call Sign	<i>MAQK4</i>	
LOA	<i>10.1m</i>	
Vessel Contact Details		
VHF	<i>Ch. 16/Ch. 12</i>	

9.4 Jack-up Operations

The jack-up vessel, Wind Server, will visit be working on West of Duddon Sands Wind Farm. The exact sequence of turbine locations is unavailable, however details of the area in which the vessel will be working is detailed on the below site chart. The windfarm has been divided into five sectors defined by A1 (Blue), A2 (Green), A3 (Pink), A4 (Yellow), A5 (Teal). Wind Server is currently working in area A2 (Green) and expected to be so for the next few weeks. It is requested that fishing and laying gear is avoided in these areas until works are complete. Duration dates are dependent on weather and work progress.



Safety Zone

Mariners should note that there is a mandatory 500m Safety Zone³ whenever a Jack-up is pulled-up alongside a Turbine. A minimum 500 metres is also requested whenever the vessel can be observed afloat and manoeuvring into position.

Vessel Information

Contact can be made directly with the vessels using the contact details listed below.

General Information		Vessel Picture
Name	Wind Server	
Flag	Denmark	
Year Built	2014	
IMO Number	9670793	
Call Sign	OWLB2	
LOA	79.3m	
Vessel Contact Details		
VHF	Ch. 16/Ch. 12	

9.5 Other Operations

Nothing to report

³ In accordance with section 95 of the Energy Act 2004 .

